

2023-2024 Enrollment Guide
Oregon and Southwest Washington

Care for all that is you



249279260_OE_08-23

kp.org/newmember



All plans offered and underwritten by Kaiser Foundation Health Plan of the Northwest.
500 NE Multnomah St., Suite 100, Portland, OR 97232.

Summary of Medical Benefits

All plans offered and underwritten by Kaiser Foundation Health Plan of the Northwest, 500 NE Multnomah St., Suite 100, Portland, OR 97232

Oregon - Custom Traditional Plan

7/1/2024 - 6/30/2025

Linn County

Group Number: 2493-006

Calendar year is the time period (Year) in which dollar, day, and visit limits, Deductibles and Out-of-Pocket Maximums accumulate.

Deductible	
Self-only Deductible per Year (for a Family of one Member)	None
Individual Family Member Deductible per Year (for each Member in a Family of two or more Members)	None
Family Deductible per Year (for an entire Family)	None
Out-of-Pocket Maximum ¹	
Self-only Out-of-Pocket Maximum per Year (for a Family of one Member)	\$600
Individual Family Member Out-of-Pocket Maximum per Year (for each Member in a Family of two or more Members)	\$600
Family Out-of-Pocket Maximum per Year (for an entire Family)	\$1,200
Office Visits	
	You pay
Routine preventive physical exam	\$0
Telehealth (phone/video)	\$0
Primary Care	\$5
Specialty Care	\$5
Urgent Care	\$25
Tests (outpatient)	
	You pay
Preventive Tests	\$0
Laboratory	\$5 per department visit
X-ray, imaging, and special diagnostic procedures	\$5 per department visit
CT, MRI, PET scans	\$10 per department visit
Medications (outpatient)	
	You pay
Prescription drugs (up to a 30 day supply)	\$10 generic / \$20 preferred brand / \$40 non-preferred brand
Mail Order Prescription drugs (up to a 90 day supply)	\$20 generic / \$40 preferred brand / \$80 non-preferred brand
Administered medications, including injections (all outpatient settings)	20% Coinsurance
Nurse treatment room visits to receive injections	\$5
Maternity Care	
	You pay
Scheduled prenatal care visits and postpartum visits	\$0
Laboratory	\$5 per department visit
X-ray, imaging, and special diagnostic procedures	\$5 per department visit
Inpatient Hospital Services	\$50 per day up to \$250 per admission
Hospital Services	
	You pay
Ambulance Services (per transport)	\$75
Emergency services	\$200 (Waived if admitted)
Inpatient Hospital Services	\$50 per day up to \$250 per admission

Outpatient Services (other)	You pay
Outpatient surgery visit	\$20
Chemotherapy/radiation therapy visit	\$5
Durable medical equipment	20% Coinsurance
Physical, speech, and occupational therapies (up to 20 visits per therapy per Year)	\$5
Skilled Nursing Facility Services	You pay
Inpatient skilled nursing Services (up to 100 days per Year)	\$0
Mental Health and Substance Use Disorder Services	You pay
Outpatient Services	\$5 per visit
Inpatient hospital & residential Services	\$50 per day up to \$250 per admission
Alternative Care (self-referred)	You pay
Acupuncture Services	Not covered
Chiropractic Services	Not covered
Massage Therapy	Not covered
Naturopathic Medicine	\$5
Vision Services	You pay
Routine eye exam (Covered until the end of the month in which Member turns 19 years of age.)	\$0
Vision hardware and optical Services (Covered until the end of the month in which Member turns 19 years of age.)	No charge for one pair standard frames and lenses or 12-month supply contact lenses per year.
Routine eye exam (For members 19 years and older.)	\$5
Vision hardware and optical Services (For members 19 years and older.)	Initial allowance of up to \$250 for prescription eyeglasses or conventional or disposable prescription contact lenses, including Medically Necessary contact lenses, not more than once every Year.

¹ Refer to your Evidence of Coverage (EOC) for benefits that may not apply to Out-of-Pocket Maximum.

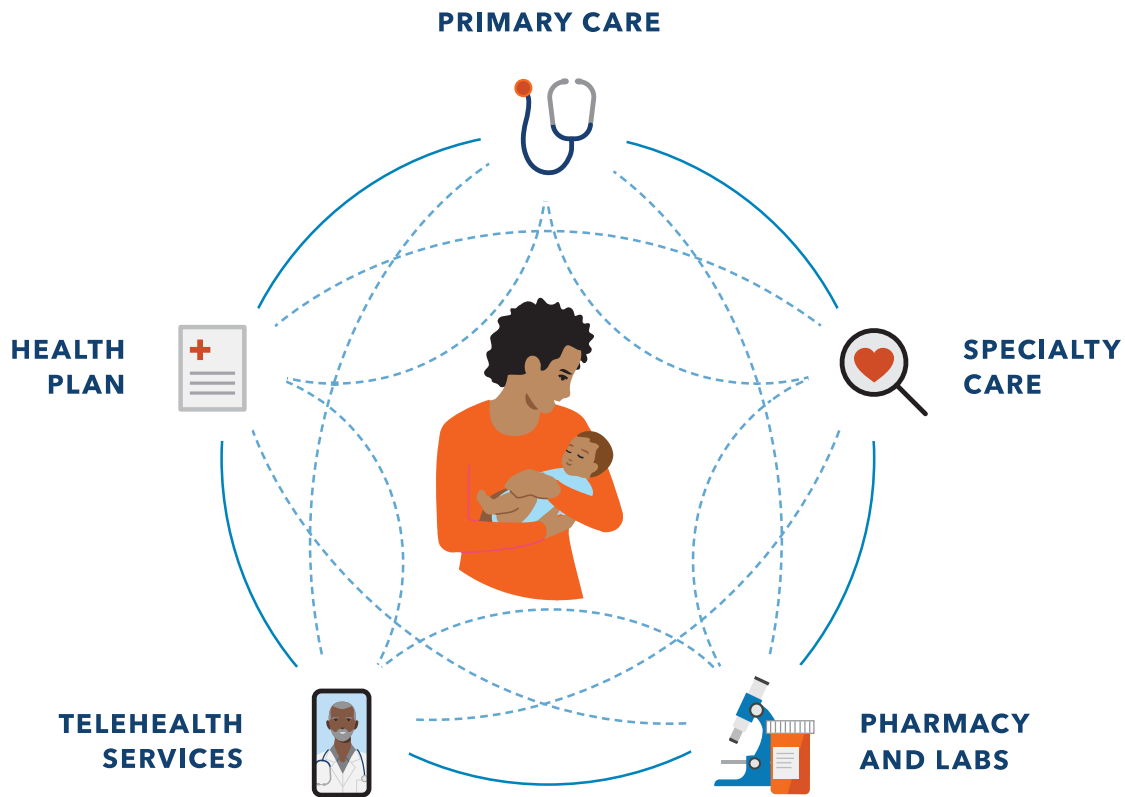
Plan is subject to exclusions and limitations. A complete list of the exclusions and limitations is included in the Evidence of Coverage (EOC). Sample EOCs are available upon request or you may go to kp.org/plandocuments.

Non-participating providers may bill you for any charges in excess of the Allowed Amount (balance billing), except where balance billing is prohibited by law. You are protected from balance billing in connection with emergency services and certain services provided at a participating hospital or ambulatory surgical center. For additional information, visit <https://healthy.kaiserpermanente.org/oregon-washington/support/pay-bills/medical-bills/no-surprises-act>.

Questions? Call Member Services (M-F, 8 am-6 pm) or visit kp.org. Portland area: 503-813-2000

All other areas: 1-800-813-2000. TTY, all areas: 711. Language Interpretation Services, all areas: 1-800-324-8010

This is not a contract. This condensed summary of benefits does not fully describe your benefit coverage with Kaiser Foundation Health Plan of the Northwest. For more details on benefit coverage, claims review, and adjudication procedures, please see your EOC or call Member Services. In the case of a conflict between this summary and the EOC, the EOC will prevail.



Built to make your life easier

Combined care and coverage means your Kaiser Permanente doctors, hospitals, and health plan benefits are all connected and committed to providing you with exceptional care tailored to your needs.

It's easier access to top specialists and the latest treatments.

It's predictable costs and less paperwork.

It's the right care, when you need it.



Find out how we can help you stay healthy and keep doing what you love.

kp.org/allthatisyoud

Go where you feel like your best self

We can help you get to your healthy place – no matter where it is. Care at Kaiser Permanente can feel easier and faster, with the help of connected caregivers, more ways to get care, and support for the whole you. Welcome to care that helps fit your life.

LEARN MORE ABOUT:

Care that's personalized	4
Care that's convenient.....	5
Care that's world class.....	6
A great experience from the start.....	7
New member care transition	8
Making the most of your membership	9
Save on wellness services and products.....	10
Where to find care	11
Community is at our core.....	13

Want to talk? We're here to help.

A Kaiser Permanente enrollment specialist can answer your questions – like where to get care or what options are included. Call **1-800-514-0985** (TTY **711**), Monday through Friday, 7 a.m. to 6 p.m. Pacific time.



Care that's personalized

For the you who deserves to be understood

Kaiser Permanente doctors have one priority: your health. Your electronic health record connects your care team with your health history, so your doctor can plan the right care for your needs. They learn your lifestyle, risks, and goals to understand what matters most to you and be your best health advocate.



Explore care that fits your life.

kp.org/connectedtocare

We guide you through every step of your care



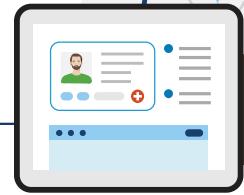
Your health history lives on your electronic health record



Your doctor guides you through appointments and referrals



Your health record is available to you and your care team 24/7



Your care team lets you know when to schedule checkups and tests



Care that's convenient

For the you with a busy schedule

Visit kp.org or use our app to make a routine same-day or next-day appointment in person, or talk to a clinician 24/7 by phone or video.¹ No matter how you connect, you'll always talk with a medical professional who can see your health history and pick up where you left off.

Do more in one visit

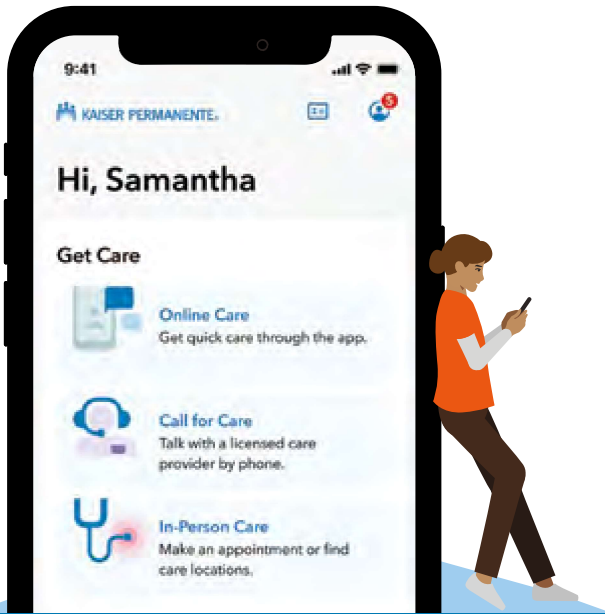
Many of our facilities have pharmacies and labs in the same building, so you can see your doctor, get your tests, and pick up your prescriptions all in one stop.

Your health at your fingertips

- Get 24/7 virtual care
- Email your care team
- View most lab results and doctor's notes
- Refill most prescriptions
- Check in for appointments
- Pay bills and view statements



See how the Kaiser Permanente app² puts you in control. kp.org/mobile



FAST COMPANY | **THE WEBBY AWARDS**

Our mobile app won Fast Company's 2022 Design Company of the Year and the 2022 People's Voice Webby award for Health and Fitness Apps.

You're covered while traveling



If you're planning to travel, we can help you manage your vaccinations, refill prescriptions, and more. And once you're on the go, you're covered for urgent and emergency care anywhere in the world. Visit kp.org/travel for more details.

¹. When appropriate and available. If you travel out of state, phone appointments and video visits may not be available due to state laws that may prevent doctors from providing care across state lines. Laws differ by state. ². To use the Kaiser Permanente app, you must be a Kaiser Permanente member registered on kp.org. These features are available when you get care from Kaiser Permanente facilities.

Care that's world class

For the you who expects the best

No matter your needs – mental health, maternity, cancer care, heart health, and beyond – you have access to expert doctors, cutting-edge technology, and the latest evidence-based care.



Learn how our doctors and specialists work for you.
kp.org/specialtycare



We're a national leader in screening rates and research, and we're among the top-rated health plans in every state we serve.^{1,2,3}

Kaiser Permanente members are:



4x

more likely to complete cardiac rehabilitation programs with the right support⁴

52%

more likely to survive colorectal cancer⁵

33%

less likely to experience premature death due to cancer⁶



All 39 Kaiser Permanente hospitals across the country have been recognized by U.S. News & World Report as high performing in one or more types of care.

1. Kaiser Permanente 2022 HEDIS® scores. Benchmarks provided by the National Committee for Quality Assurance (NCQA) Quality Compass® and represent all lines of business. Kaiser Permanente combined region scores were provided by the Kaiser Permanente Department of Care and Service Quality. The source for data contained in this publication is Quality Compass 2022 and is used with the permission of NCQA. Quality Compass 2022 includes certain CAHPS data. Any data display, analysis, interpretation, or conclusion based on these data is solely that of the authors, and NCQA specifically disclaims responsibility for any such display, analysis, interpretation, or conclusion. Quality Compass® and HEDIS® are registered trademarks of NCQA. CAHPS® is a registered trademark of the Agency for Healthcare Research and Quality.

2. 2021 Annual Report, Kaiser Permanente, [about.kaiserpermanente.org/who-we-are/annual-reports/2021-annual-report](https://www.kaiserpermanente.org/who-we-are/annual-reports/2021-annual-report) 3. NCQA's Private Health Insurance Plan Ratings 2022-2023, National Committee for Quality Assurance, 2022: Kaiser Foundation Health Plan of Colorado – HMO (rated 4 out of 5); Kaiser Foundation Health Plan of Georgia, Inc. – HMO (rated 4 out of 5); Kaiser Foundation Health Plan, Inc., of Hawaii – HMO (rated 4 out of 5); Kaiser Foundation Health Plan of the Mid-Atlantic States, Inc. – HMO (rated 5 out of 5); Kaiser Foundation Health Plan, Inc., of Northern California – HMO (rated 4.5 out of 5); Kaiser Foundation Health Plan of the Northwest – HMO (rated 4 out of 5); Kaiser Foundation Health Plan, Inc., of Southern California – HMO (rated 4.5 out of 5); Kaiser Foundation Health Plan of Washington – HMO (rated 4 out of 5).

4. Kaiser Permanente's virtual cardiac rehab program completion rate is more than 80% - four times greater than the center-based program.

5. Theodore R. Levin, MD, et al., "Effects of Organized Colorectal Cancer Screening on Cancer Incidence and Mortality in a Large, Community-Based Population," *Gastroenterology*, November 2018. 6. Elizabeth A. McGlynn, PhD, et al., "Measuring Premature Mortality Among Kaiser Permanente Members Compared to the Community," July 20, 2022

A great experience from the start

For the you who is just getting started

Switching plans can seem like a lot of work, but at Kaiser Permanente, we help guide new members through each step. So you can get the care you need without missing a beat.



Follow these simple steps to get started.

kp.org/newmember



Step 1: Choose your doctor

We know having a doctor you connect with is an important part of taking care of your health. Browse our online doctor profiles to find a doctor and locations in your area, even before you enroll, at kp.org/newmember.



Step 2: Connect to care online

Once your coverage begins, create an account at kp.org or download the Kaiser Permanente app.* Then manage your health on your schedule – whenever, wherever.



Step 3: Get prescriptions

Have your prescription information handy, and we'll help you take care of the rest. Follow the steps to transition your prescriptions online or call the New Member Welcome Desk at **1-888-491-1124** (TTY **711**) Monday through Friday, 8 a.m. to 5 p.m.

Health care doesn't have to be confusing

If you don't know an HMO from an HSA, you're not alone. But rest assured – we're here to help make health care easier to understand. Get help learning the basics at kp.org/learnthebasics.







*To use the Kaiser Permanente app, you must be a Kaiser Permanente member registered on kp.org. These features are available when you get care from Kaiser Permanente facilities.

New member care transition

For the you who needs a little help

Our goal is to help determine your unique needs and connect you with the doctors, specialists, and prescription medications to effectively manage your care transition.

Types of medical needs our New Member Welcome Desk can help with:

	Common needs	<ul style="list-style-type: none">• Choose a doctor.• Schedule a routine appointment.• Transfer prescriptions. <p>Also available 24/7 for self-service at kp.org.</p>
	Parent and child needs	<ul style="list-style-type: none">• Select a pediatrician or family practice doctor.• Connect with an ob-gyn.• Transfer records and health history.• Transfer prescriptions.• Schedule vaccinations and well-child visits.
	Specialty care needs	<ul style="list-style-type: none">• Connect with specialists such as oncologists, orthopedists, and ear, nose, and throat doctors.• Connect with mental health professionals.• Determine durable medical equipment needs.
	Complex medical needs	<ul style="list-style-type: none">• Connect with specialty care for conditions such as cancer, renal disease, pre-/post-surgery, and transplants.• Connect with a pharmacy for specialty prescriptions and infusions.

Visit kp.org/newmember to get started on your own or call the New Member Welcome Desk at **1-888-491-1124** (TTY **711**). Help is available Monday through Friday, 8 a.m. to 5 p.m.



Making the most of your membership

Good health goes beyond the doctor's office. Find your healthy place by exploring some of the convenient features and extras available to members.¹ Many of these resources are available at no additional cost.



Kaiser Permanente app

Manage your health 24/7 – schedule appointments, email your doctor's office with nonurgent questions, order most prescription refills, see most test results, pay bills, read your doctor's notes, and more.²



On-demand and in-person workouts via ClassPass³

Choose from thousands of on-demand workout videos and get reduced rates on livestream and in-person classes. Learn more at kp.org/classpass.



Healthy lifestyle programs

Connect to better health with programs to help you lose weight, quit smoking, reduce stress, and more – all at no additional cost. Learn more at kp.org/healthylifestyles.



Wellness coaching

Get help reaching your health goals by working one-on-one with a wellness coach by phone. Learn more at kp.org/wellnesscoach.

Extras for your total health^{4,5,6}

As a Kaiser Permanente member, you have access to a wide range of tools to help you manage your total health. Visit kp.org/mentalhealth to learn more.



Members can use meditation and mindfulness to help build mental resilience, reduce stress, and improve sleep.



Members can set mental health goals, track progress, and get support managing depression, anxiety, and more.



This preventive, on-demand approach to mental health provides support anywhere, anytime.

1. These services aren't covered under your health plan benefits and aren't subject to the terms set forth in your *Evidence of Coverage* or other plan documents. These services may be discontinued at any time without notice. **2.** These features apply to care you get at Kaiser Permanente facilities. To use the Kaiser Permanente app, you must be a Kaiser Permanente member registered on kp.org. **3.** ClassPass is not available to Kaiser Permanente Dental-only members. **4.** Only available to Kaiser Permanente members with medical coverage; myStrength® is a trademark of Livongo Health, Inc., a wholly owned subsidiary of Teladoc Health, Inc. **5.** Calm and myStrength can be used by members 13 years and older. The Ginger app and services are not available to members under 18 years of age. **6.** Calm, my Strength, and Ginger are not available to Kaiser Permanente Dental-only members.

Save on wellness services and products

For the you who is looking for savings

At Kaiser Permanente, you can enjoy discounted online tools, classes, programs, and activities that can help keep you happy and healthy. Visit kp.org/memberdiscounts for more information.

CHP Active and Healthy

This program can help you and your family save money on your favorite healthy, fun, and stress-relieving activities.

Explore the below options and more at chpactiveandhealthy.com.

Outdoor and adventure

Save on rock-climbing gyms, outdoor schools, guided fishing trips, ski rentals, and other activities that will get you out and about.

Arts and culture

Get discounts that will help you explore local museums, gardens, art galleries, and performing arts centers. You can also save on music lessons and get discounted movie tickets.

Exercise

From boot camps, martial arts classes, and health and fitness clubs, to aquatic centers, dance studios, and personal training lessons, you can save on a host of exercise-related memberships and services.

Eating well

You'll find deals on cooking classes, nutritional supplements, weight management services, gardening supplies, and more.

Alternative care and chiropractic

Get discounts on naturopathic medicine, chiropractic care, massage, and other alternative therapies from providers belonging to The CHP Group network. Visit chpgroup.com to learn more and select your provider.

ChooseHealthy®

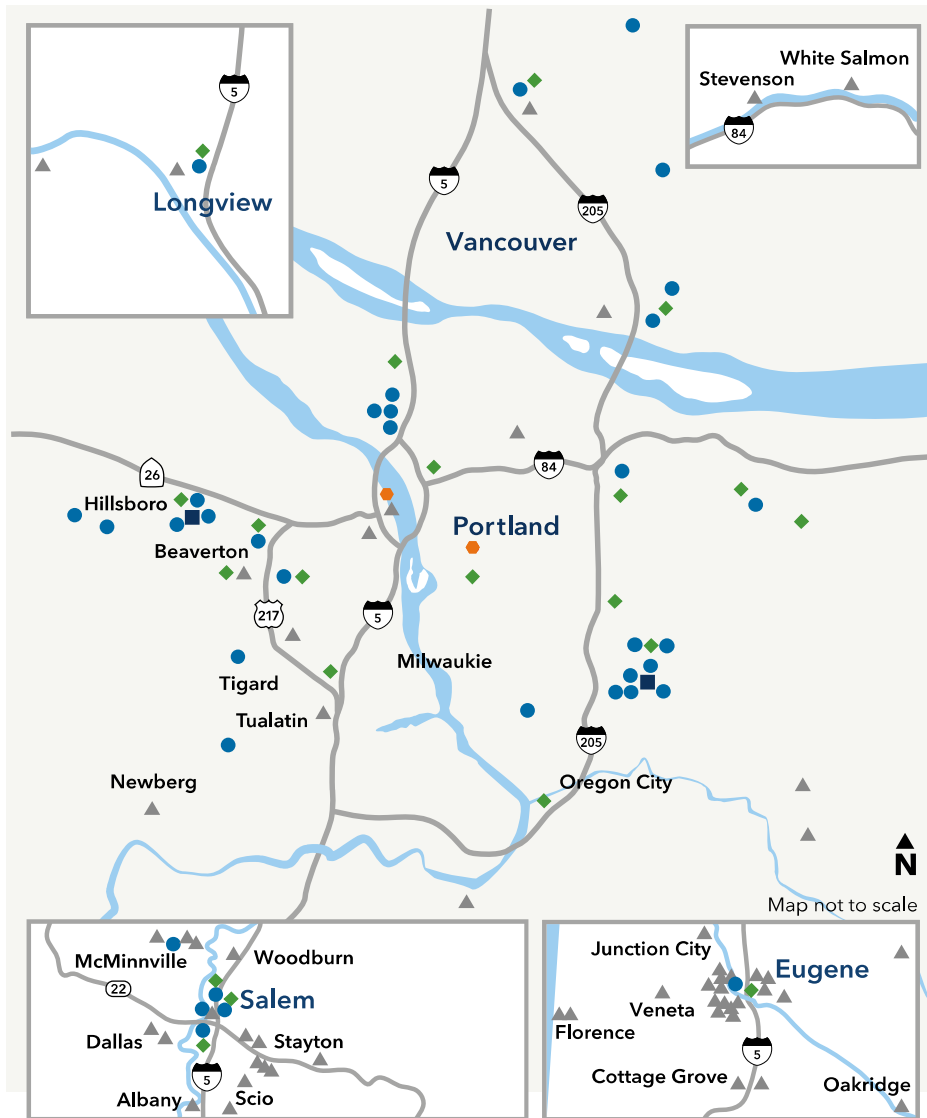
With the ChooseHealthy program, you can continue on the road to wellness. ChooseHealthy is an online resource for health information, health and fitness tools, and discounts on health products. This program is available at no additional cost to you. Learn more at kp.org/choosehealthy.

- Plan your meals for the month with meal plans that are suited to your tastes, fitness level, and weight goals.
- Get personalized cardio and strength training plans based on your fitness goals.
- Get savings like membership discounts and initiation fee discounts at more than 100 fitness clubs, yoga studios, and exercise centers from Longview, Washington, to Eugene, Oregon.

These products and services are provided by entities other than Kaiser Foundation Health Plan of the Northwest (KFHPNW). Certain KFHPNW benefit plans include coverage for some of these discounted services. Check your *Evidence of Coverage* for details. KFHPNW disclaims any liability for these discounted products and services. Should a problem arise, you may take advantage of our grievance process by calling Member Services at 1-800-813-2000 (TTY 711).

Where to find care in Oregon and Southwest Washington

We provide quality care to more than 600,000 members in Oregon and Southwest Washington. Our service area extends from Eugene, Oregon, to Longview, Washington, and includes medical offices, dental offices, Vision Essentials by Kaiser Permanente optical retail locations, urgent care clinics, hospitals, and Care Essentials clinics. We also have a network of affiliated providers for routine, urgent, or emergency care.



■ Kaiser Permanente Hospital
 ● Kaiser Permanente Medical Office
◆ Kaiser Permanente Dental Office
 ● Care Essentials® by Kaiser Permanente
 ▲ Affiliate Location



Get care now

Choose from convenient options, like 24/7 phone and video, or an e-visit, and find the care you need, when and where you need it.*

kp.org/getcare



Facility information current as of July 2023.

Go to kp.org/locations to see all our current locations and to find the facility closest to you. Or call Member Services at **1-800-813-2000 (TTY 711)**.

*When appropriate and available. These features are available when you get care at Kaiser Permanente facilities. For high deductible health plan members, e-visits, phone, and video appointments are subject to your plan's annual deductible. If you travel out of state, phone appointments and video visits may not be available due to state laws that may prevent doctors from providing care across state lines. Laws differ by state. To have a video visit, members must be registered on kp.org and have a camera-equipped computer or mobile device. Applicable cost shares will apply for services or items ordered during an e-visit.

Where to find care in Oregon and Southwest Washington

Dental

With Kaiser Permanente's coordinated medical and dental care and coverage, it can be simpler to take care of your total health. Our skilled dentists, convenient dental locations, and quality services will help make you smile. Learn more at kp.org/dental/nw.

Pharmacy

Most of our Kaiser Permanente medical offices include pharmacy services. You also have the option of using our mail-order pharmacy service to fill and refill most prescriptions.

Vision Essentials by Kaiser Permanente

Our optometrists, ophthalmologists, and opticians work together within our integrated care delivery system and are able to connect to our larger team of medical professionals and services.

Learn more at kp2020.org.

Care Essentials by Kaiser Permanente

Care Essentials by Kaiser Permanente are convenient care clinics that provide nonemergency and preventive health services to both Kaiser Permanente members and nonmembers.

- Treatment for minor illnesses and injuries
- Preventive services, including checkups, vaccinations, and some lab and diagnostic testing

Learn more at careessentials.org.

Affiliate Providers

Kaiser Permanente health plans include access to affiliate providers for primary and specialty care, including The Portland Clinic.*

*Not available as an in-network provider to members on Medicaid, receiving full Medical Financial Assistance from Kaiser Permanente, or visiting from another Kaiser Permanente region.

Community is at our core

Kaiser Permanente furthers our mission with initiatives that help people address the clinical, social, economic, and environmental factors that affect their health. This work enlists our entire organization and region: doctors, dentists, nurses, technicians, navigators, employees, and our community partners from Longview, Washington, to Eugene, Oregon.

In 2022, Kaiser Permanente dedicated **more than \$135 million** to initiatives that help improve the total health of our members and the communities we serve.*

\$3.3 million

awarded to organizations supporting BIPOC, immigrant and refugee, and LGBTQ2SIA+ communities through social-emotional well-being grants

85,836

Medicaid patients received care through Kaiser Permanente's participation in Oregon Health Plan and Washington State AppleHealth

4,436

people who accessed services through Connect Oregon and Unite Washington to get help with social health needs

11,691

vaccine doses administered through our partnership with Medical Teams International (MTI)

16,434

hours of community service by Kaiser Permanente Northwest employees

\$135,789,073

invested in community health initiatives across the Northwest

*Kaiser Permanente Community Health Snapshot 2022: kp.org/communityreport/nw

Nondiscrimination Notice

Kaiser Foundation Health Plan of the Northwest (Kaiser Health Plan) complies with applicable federal and state civil rights laws and does not discriminate on the basis of race, color, national origin, age, disability, sex, gender identity, or sexual orientation. Kaiser Health Plan does not exclude people or treat them differently because of race, color, national origin, age, disability, sex, gender identity, or sexual orientation. We also:

- Provide no cost aids and services to people with disabilities to communicate effectively with us, such as:
 - Qualified sign language interpreters
 - Written information in other formats, such as large print, audio, and accessible electronic formats
- Provide no cost language services to people whose primary language is not English, such as:
 - Qualified interpreters
 - Information written in other languages

If you need these services, call Member Services at **1-800-813-2000** (TTY: **711**).

If you believe that Kaiser Health Plan has failed to provide these services or discriminated in another way on the basis of race, color, national origin, age, disability, sex, gender identity, or sexual orientation, you can file a grievance with our Civil Rights Coordinator, by mail, phone, or fax. If you need help filing a grievance, our Civil Rights Coordinator is available to help you. You may contact our Civil Rights Coordinator at: Member Relations Department, Attention: Kaiser Civil Rights Coordinator, 500 NE Multnomah St. Ste 100, Portland, OR 97232-2099, Phone: **1-800-813-2000** (TTY: **711**), Fax: **1-855-347-7239**.

You can also file a civil rights complaint with the U.S. Department of Health and Human Services, Office for Civil Rights, electronically through the Office for Civil Rights Complaint portal, available at <https://ocrportal.hhs.gov/ocr/portal/lobby.jsf>, or by mail or phone at: U.S. Department of Health and Human Services, 200 Independence Avenue SW, Room 509F, HHH Building, Washington, DC 20201, Phone: 1-800-368-1019, TDD: 1-800-537-7697. Complaint forms are available at www.hhs.gov/ocr/office/file/index.html.

For Washington Members

You can also file a complaint with the Washington State Office of the Insurance Commissioner, electronically through the Office of the Insurance Commissioner Complaint portal, available at <https://www.insurance.wa.gov/file-complaint-or-check-your-complaint-status>, or by phone at 1-800-562-6900, or 360-586-0241 (TDD). Complaint forms are available at <https://fortress.wa.gov/oic/onlineservices/cc/pub/complaintinformation.aspx>.

Help in Your Language

ATTENTION: If you speak English, language assistance services, free of charge, are available to you. Call **1-800-813-2000** (TTY: 711).

አማርኛ (Amharic) ማስታወሻ: የሚናገሩት ቋንቋ አማርኛ ከሆነ የትርጉም እርዳታ ድርጅቶች፣ በነጻ ሊያገዝዎት ተዘጋጅተዋል። ወደ ሚከተለው ቁጥር ይደውሉ **1-800-813-2000** (TTY: 711)።

العربية (Arabic) ملحوظة: إذا كنت تتحدث العربية، فإن خدمات المساعدة اللغوية تتوافر لك بالمجان. اتصل برقم **1-800-813-2000** (TTY: 711).

中文 (Chinese) 注意: 如果您使用繁體中文，您可以免費獲得語言援助服務。請致電**1-800-813-2000** (TTY: 711)。

فارسی (Farsi) توجه: اگر به زبان فارسی گفتگو می کنید، تسهیلات زبانی بصورت رایگان برای شما فراهم می باشد. با **1-800-813-2000** (TTY: 711) تماس بگیرید.

Français (French) ATTENTION: Si vous parlez français, des services d'aide linguistique vous sont proposés gratuitement. Appelez le **1-800-813-2000** (TTY: 711).

Deutsch (German) ACHTUNG: Wenn Sie Deutsch sprechen, stehen Ihnen kostenlos sprachliche Hilfsdienstleistungen zur Verfügung. Rufnummer: **1-800-813-2000** (TTY: 711).

日本語 (Japanese) 注意事項: 日本語を話される場合、無料の言語支援をご利用いただけます。**1-800-813-2000** (TTY: 711) まで、お電話にてご連絡ください。

ខ្មែរ (Khmer) ប្រយ័ត្ន: បើសិនជាអ្នកនិយាយភាសាខ្មែរ, សេវាជំនួយផ្នែកភាសា ដោយមិនគិតលុយ គឺអាចមានសំរាប់បំរើអ្នក។ ចូរ ទូរស័ព្ទ **1-800-813-2000** (TTY: 711)។

한국어 (Korean) 주의: 한국어를 사용하시는 경우, 언어 지원 서비스를 무료로 이용하실 수 있습니다. **1-800-813-2000** (TTY: 711) 번으로 전화해 주십시오.

ລາວ (Laotian) ໂປດຊາບ: ຖ້າວ່າ ທ່ານເວົ້າພາສາ ລາວ, ການບໍລິການຊ່ວຍເຫຼືອດ້ານພາສາ, ໂດຍບໍ່ເສັຽຄ່າ, ແມ່ນມີພ້ອມໃຫ້ທ່ານ. ໂທ **1-800-813-2000** (TTY: 711).

Afaan Oromoo (Oromo) XIYYEEFFANNAA: Afaan dubbattu Oroomiffa, tajaajila gargaarsa afaanii, kanfaltiidhaan ala, ni argama. Bilbilaa **1-800-813-2000** (TTY: 711).

ਪੰਜਾਬੀ (Punjabi) ਧਿਆਨ ਦਿਓ: ਜੇ ਤੁਸੀਂ ਪੰਜਾਬੀ ਬੋਲਦੇ ਹੋ, ਤਾਂ ਭਾਸ਼ਾ ਵਿੱਚ ਸਹਾਇਤਾ ਸੇਵਾ ਤੁਹਾਡੇ ਲਈ ਮੁਫਤ ਉਪਲਬਧ ਹੈ। **1-800-813-2000** (TTY: 711) 'ਤੇ ਕਾਲ ਕਰੋ।

Română (Romanian) ATENȚIE: Dacă vorbiți limba română, vă stau la dispoziție servicii de asistență lingvistică, gratuit. Sunați la **1-800-813-2000** (TTY: 711).

Русский (Russian) ВНИМАНИЕ: если вы говорите на русском языке, то вам доступны бесплатные услуги перевода. Звоните **1-800-813-2000** (TTY: 711).

Español (Spanish) ATENCIÓN: si habla español, tiene a su disposición servicios gratuitos de asistencia lingüística. Llame al **1-800-813-2000** (TTY: 711).

Tagalog (Tagalog) PAUNAWA: Kung nagsasalita ka ng Tagalog, maaari kang gumamit ng mga serbisyo ng tulong sa wika nang walang bayad. Tumawag sa **1-800-813-2000** (TTY: 711).

ไทย (Thai) หมายเหตุ: ถ้าคุณพูดภาษาไทย คุณสามารถใช้บริการช่วยเหลือทางภาษาได้ฟรี โทร **1-800-813-2000** (TTY: 711).

Українська (Ukrainian) УВАГА! Якщо ви розмовляєте українською мовою, ви можете звернутися до безкоштовної служби мовної підтримки. Телефонуйте за номером **1-800-813-2000** (TTY: 711).

Tiếng Việt (Vietnamese) CHÚ Ý: Nếu bạn nói Tiếng Việt, có các dịch vụ hỗ trợ ngôn ngữ miễn phí dành cho bạn. Gọi số **1-800-813-2000** (TTY: 711).

Let us help you find your healthy place

A good health plan and access to quality care can be important for peace of mind. With Kaiser Permanente, you can get both.

Want to learn more?

Talk to an enrollment specialist today about specialty care, extra features, and more.

Call **1-800-514-0985** (TTY **711**),

Monday through Friday, 7 a.m. to 6 p.m. PT.

Member Services

1-800-813-2000 (English)

1-800-324-8010 (language interpretation services)
711 (TTY)

Monday through Friday, 8 a.m. to 6 p.m.

New Member Welcome Desk

1-888-491-1124

Monday through Friday, 8 a.m. to 5 p.m.

New Member Pharmacy Services

1-888-572-7231

Monday through Friday, 8 a.m. to 6 p.m.



Find a facility near you: kp.org/locations

Kaiser Foundation Health Plan of the Northwest
500 NE Multnomah St., Suite 100
Portland, OR 97232

For more information about Kaiser Permanente benefits, availability, and restrictions, go to kp.org/disclosures.